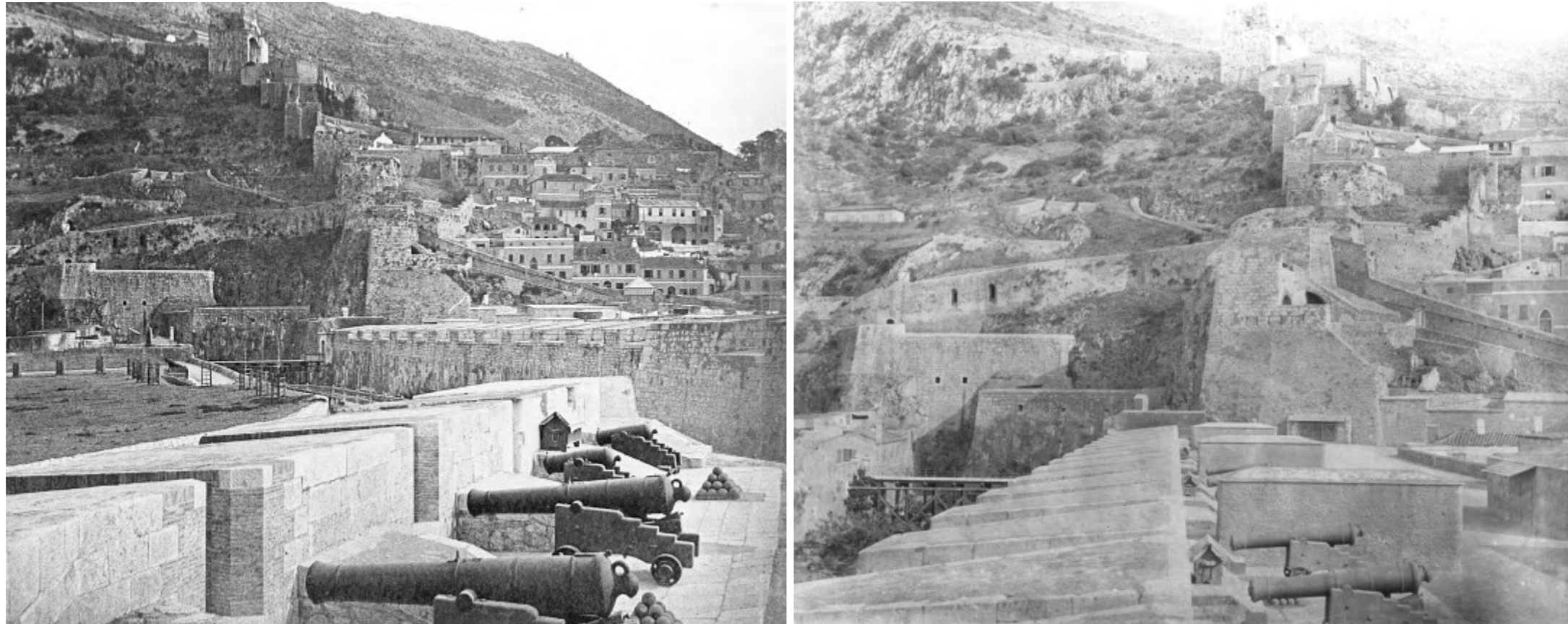


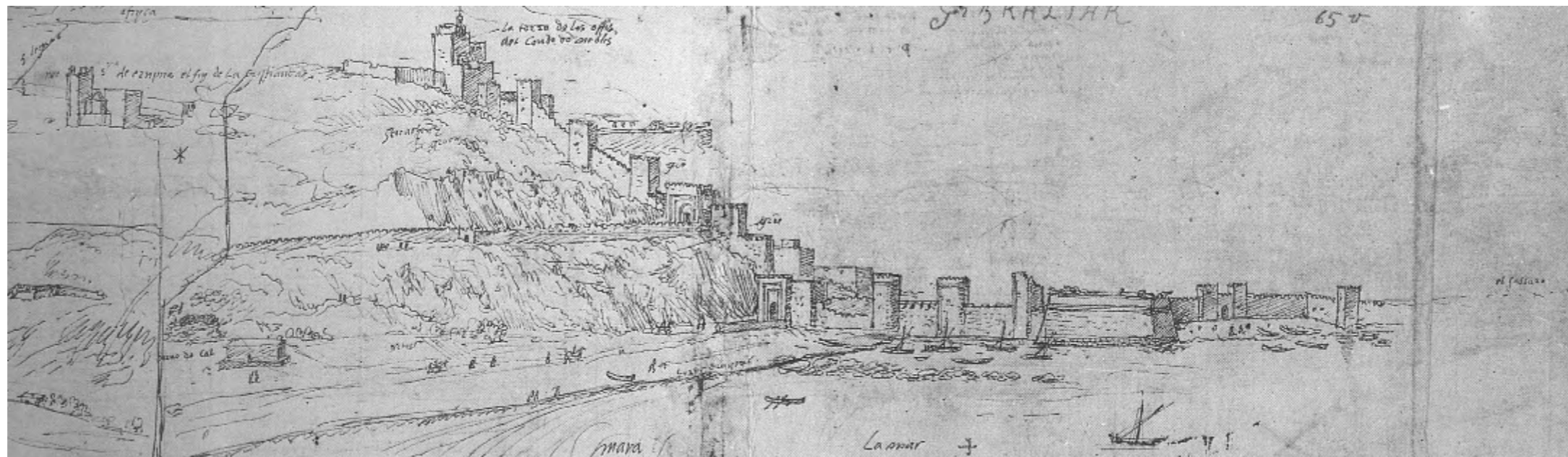


- 1
- 2
- 3
- 4
- 5
- 6
- 7
- 8
- 9
- 10
- 11
- 12
- 13
- 14



The GRAND BATTERY complex is an integral part of Gibraltar's original Northern seafront fortifications constructed between the mid 17<sup>th</sup> Century and the early 18<sup>th</sup> Century. It comprises approx. 6 - 8m high solid external stone fortification walls of mass masonry and stone of substantial thickness. Currently, the main accommodation consists of single level masonry building constructed during the 20<sup>th</sup> Century [P.T.O. for survey photographs].

The complex is clearly of major historical significance to Gibraltar and subject to the requirements of conservation and sensitivity. The original embrasures, magazine bunkers and other historical structures within the site clearly merit further investigation and study during future phases of the Project.





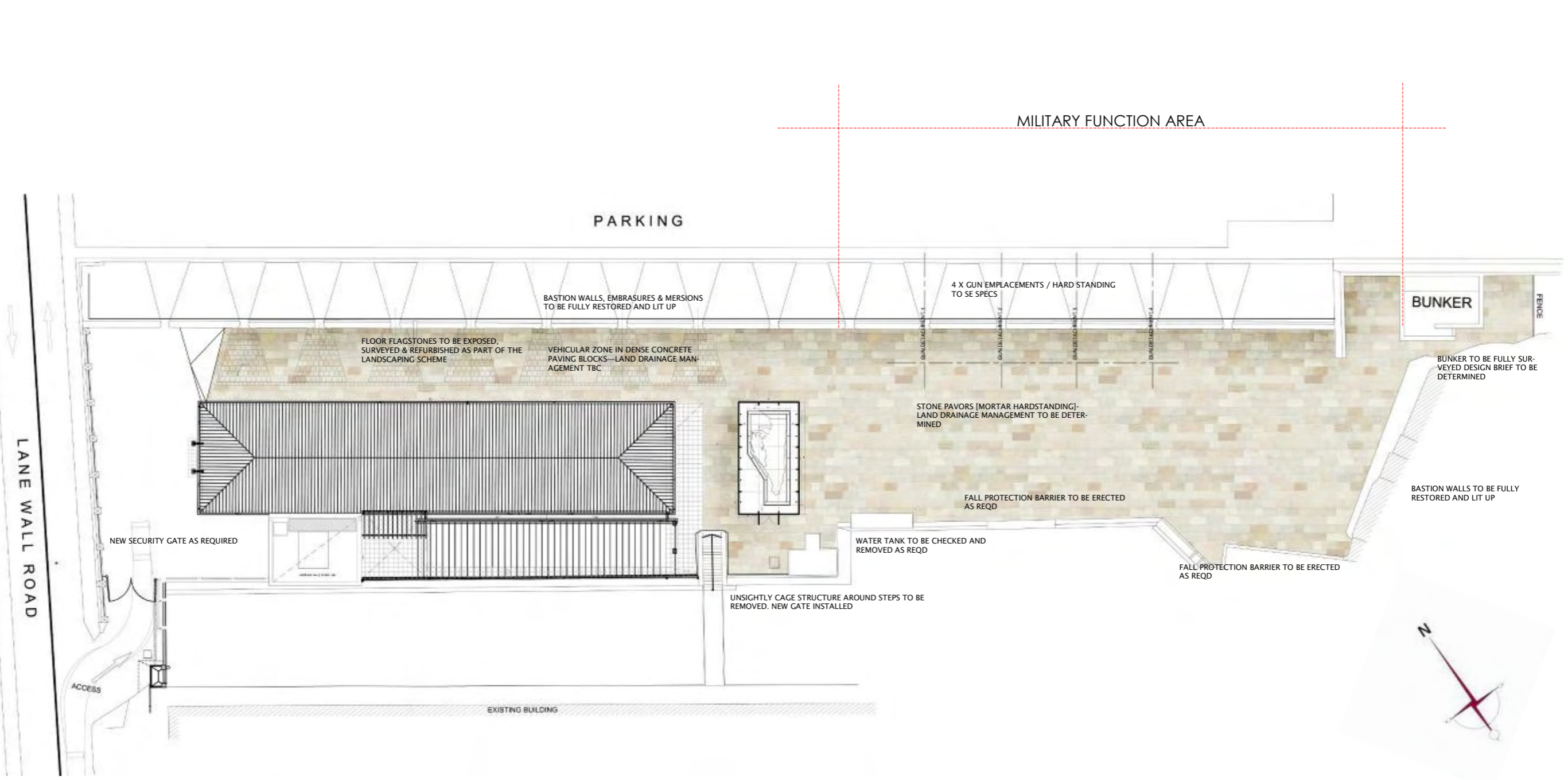
- 1
- 2
- 3
- 4
- 5
- 6
- 7
- 8
- 9
- 10
- 11
- 12
- 13
- 14



**DESIGN PRECEDENTS**

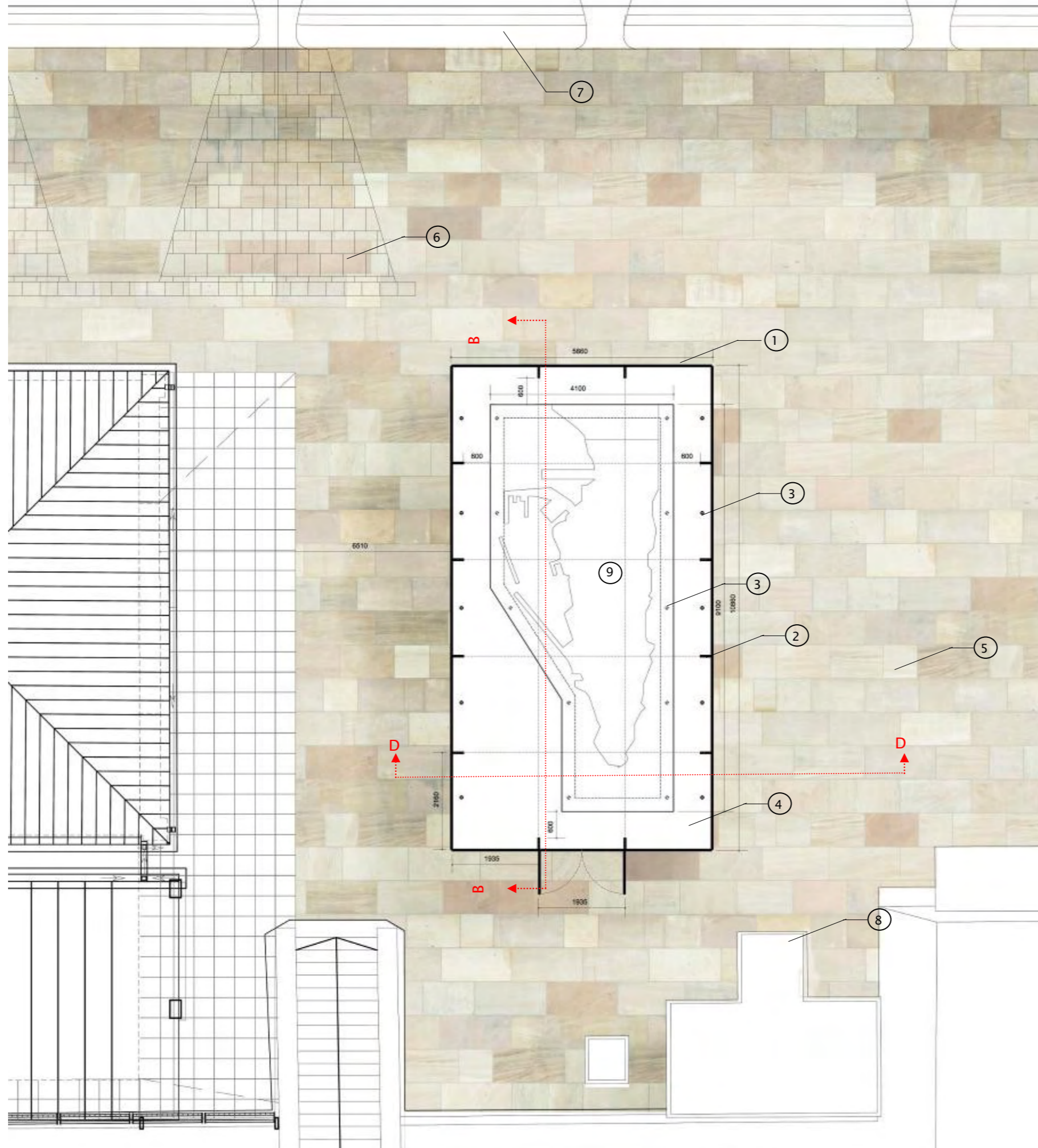
A pedestrian public through-route has been envisaged in the past as part of an overall scheme to modernise and tap into this hugely potential area.

1  
2  
3  
4  
5  
6  
7  
8  
9  
10  
11  
12  
13  
14



1  
2  
3  
4  
5  
6  
7  
8  
9  
10  
11  
12  
13  
14

# RHQ PHASE 2 LAYOUT PLAN GENERAL NOTES

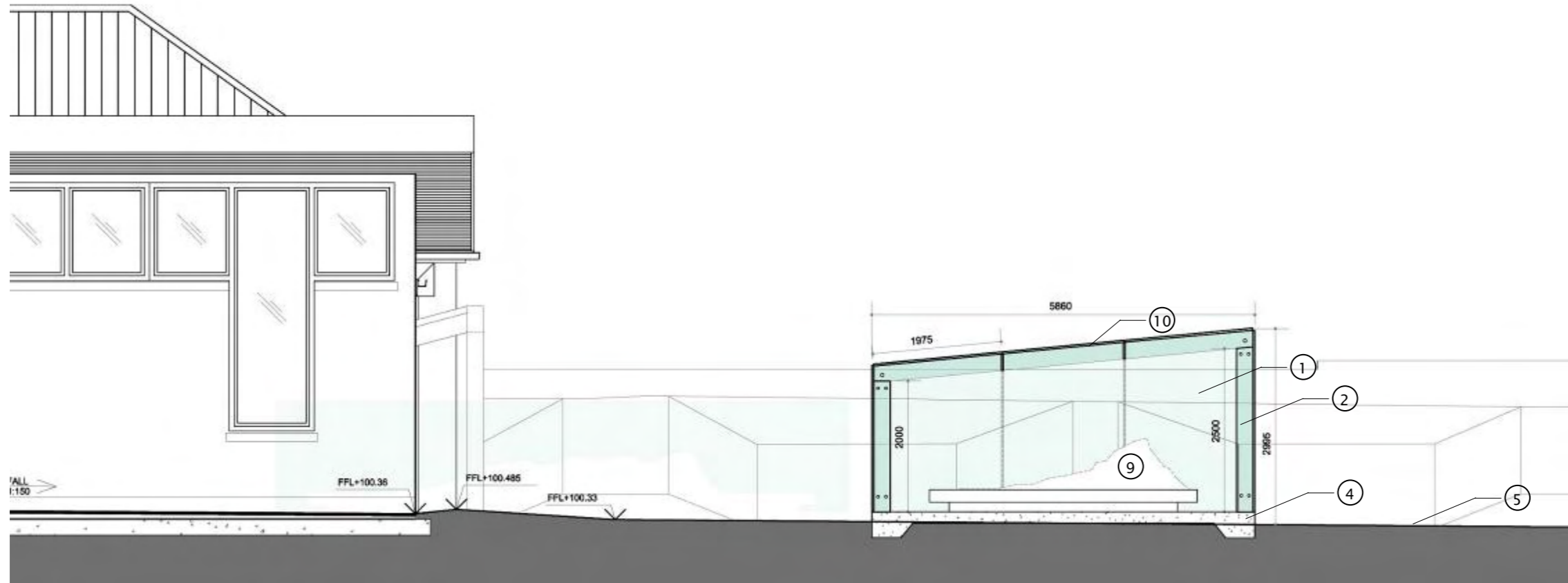


- 1 DOUBLE GLAZED COMPOSITE GLASS PANELS CONSISTING OF A LAYER 10MM LOW-E GLASS 10MM GLASS SPACER & A DOUBLE LAYER LAMINATE 2X6MM OF TOUGHENED AND HEATED GLASS. ALL JOINTS TO BE NEATLY FINISHED WITH CLEAR SILICONE SEALANT AND STAINLESS STEEL FIXINGS.
- 2 3 X 10MM TOUGHENED GLASS LAMINATED GLASS COLUMNS AND BEAMS WITH STAINLESS STEEL FIXINGS
- 3 RECESSED LED FLOOR UP-LIGHTERS
- 4 REINFORCED CONCRETE SLAB TO SE SPEC, FLOOR FINISH TBC
- 5 STONE PAVING TO BE DETERMINED
- 6 EXTG FLAGSTONES TO BE EXPOSED SURVEYED & REFURBISHED AS PART OF THE LANDSCAPING SCHEME
- 7 BASTION WALLS, EMBRASURES & MERSIONS TO BE FULLY RESTORED AND LIT UP
- 8 EXTG ELEC SUBSTATION TO BE REFURBISHED
- 9 EXTG ROCK MODEL TO BE REFURBISHED BY SPECIALIST RESOTRER



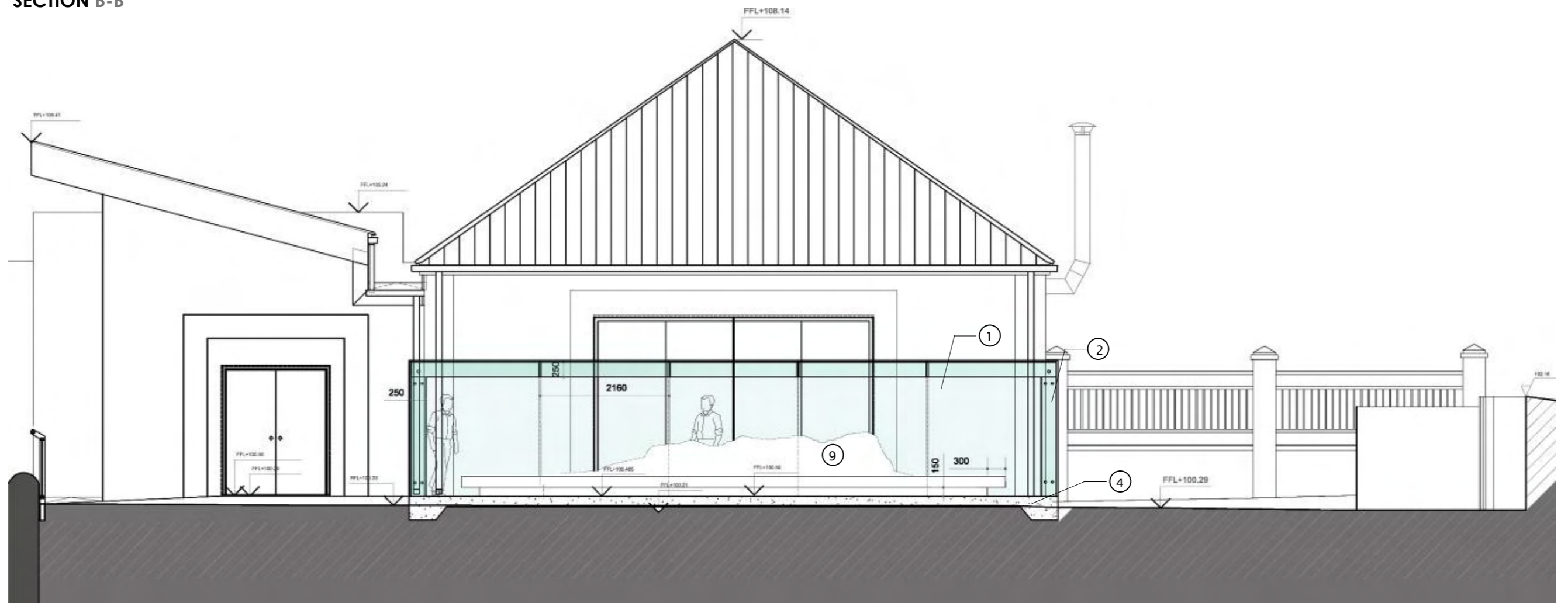
1  
2  
3  
4  
5  
6  
7  
8  
9  
10  
11  
12  
13  
14

SECTION D-D



- 1 DOUBLE GLAZED COMPOSITE GLASS PANELS CONSISTING OF A LAYER 10MM LOW-E GLASS 10MM GLASS SPACER & A DOUBLE LAYER LAMINATE 2X6MM OF TOUGHENED AND HEATED GLASS. ALL JOINTS TO BE NEATLY FINISHED WITH CLEAR SILICONE SEALANT AND STAINLESS STEEL FIXINGS.
- 2 3 X 10MM TOUGHENED GLASS LAMINATED GLASS COLUMNS AND BEAMS WITH STAINLESS STEEL FIXINGS
- 4 REINFORCED CONCRETE SLAB TO SE SPEC, FLOOR FINISH TBC
- 5 STONE PAVING TO BE DETERMINED
- 9 EXTG ROCK MODEL TO BE REFURBISHED BY SPECIALIST RESTORER
- 10 TINTED SOLAR INHIBITING LAYER TO ROOF [PERCENTAGE TO BE DETERMINED]

SECTION B-B



1  
2  
3  
4  
5  
6  
7  
8  
9  
10  
11  
12  
13  
14



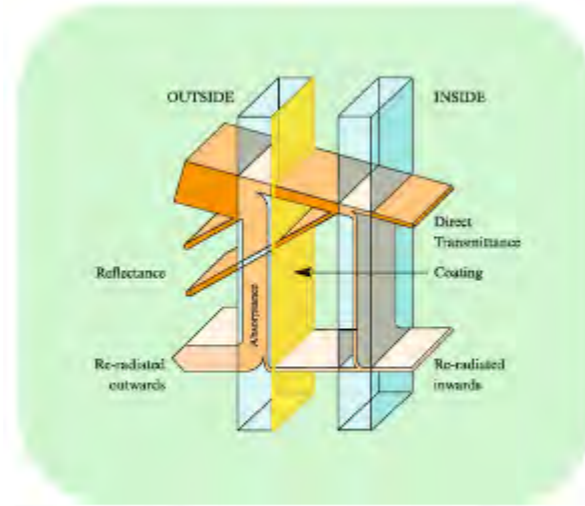
**SPECIALIST CONTACT DETAILS**

- MAQUETAS QUIROS C.B EN JEREZ DE LA FRONTERA**  
 PLAZA BASURTO Nº 9  
 11403 JEREZ DE LA FRONTERA (CÁDIZ)  
 E: INFO@MAQUETASQUIROS.COM  
 T: 956 33 59 16
- AESCALA**  
 C/MARINES 13, BAJO  
 46015 VALENCIA  
 (EN CAMPANAR)  
 E: AESCALA@AESCALAMAQUETAS.COM  
 T: 676 17 91 48
- GRUPO MODEL CREACIONES, S.L. - OFICINA CENTRAL**  
 DIRECCIÓN: POL. IND. MARTIARTU, C/3P- NAVE 30  
 LOCALIDAD: ARRIGORRIAGA  
 PROVINCIA: VIZCAYA  
 E: MAQUETAS@GRUPOMODEL.NET  
 T: 94.671.25.86



**Pilkington Suncool™ Benefits**

- Reduces solar heat gain
- Low-emissivity for high thermal insulation
- A flexible range of solar control options
- Choice of high to low light transmittance
- Wide range of colours and appearances
- Available in toughened or laminated forms
- Available with Pilkington **Planar™** architectural glazing system
- A range of matching Pilkington Spandrel Glass available
- Available on Pilkington **Optiwhite™** to help avoid thermal stress in annealed products and to increase light transmission



Insulating Glass Unit incorporating coated solar control glass



PILKINGTON GLASS PLANAR SYSTEM

Table 2: Maximum values for overall and local bow

Glass Type	Maximum overall bow (mm/mm)	Maximum local bow (mm/300mm)
Float to BS EN 572-2	0.003	0.5
Others	0.004	0.5

Table 3: Tolerances on hole diameters

Nominal hole diameter Ø (mm)	Tolerances (mm)
4 ≤ Ø ≤ 20	± 1.0
20 < Ø ≤ 100	± 2.0
100 < Ø	submit request

Tables taken from BS EN 12150-1:2000

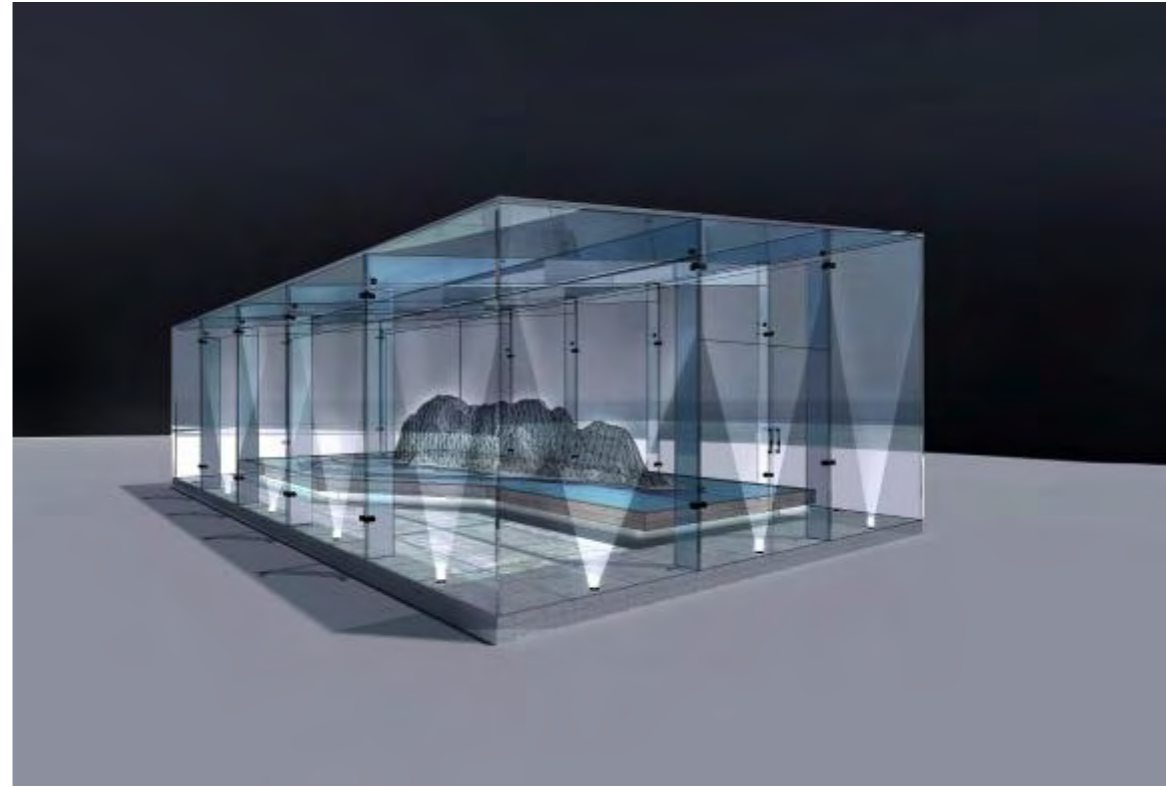
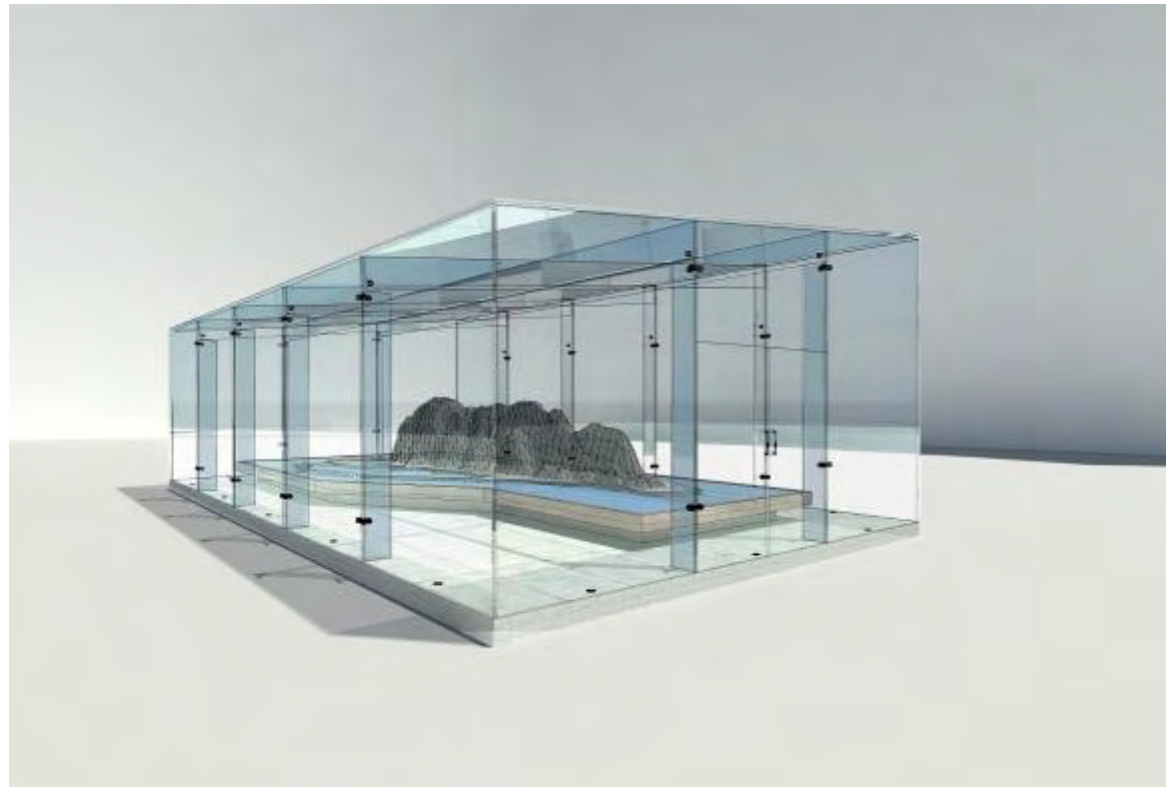
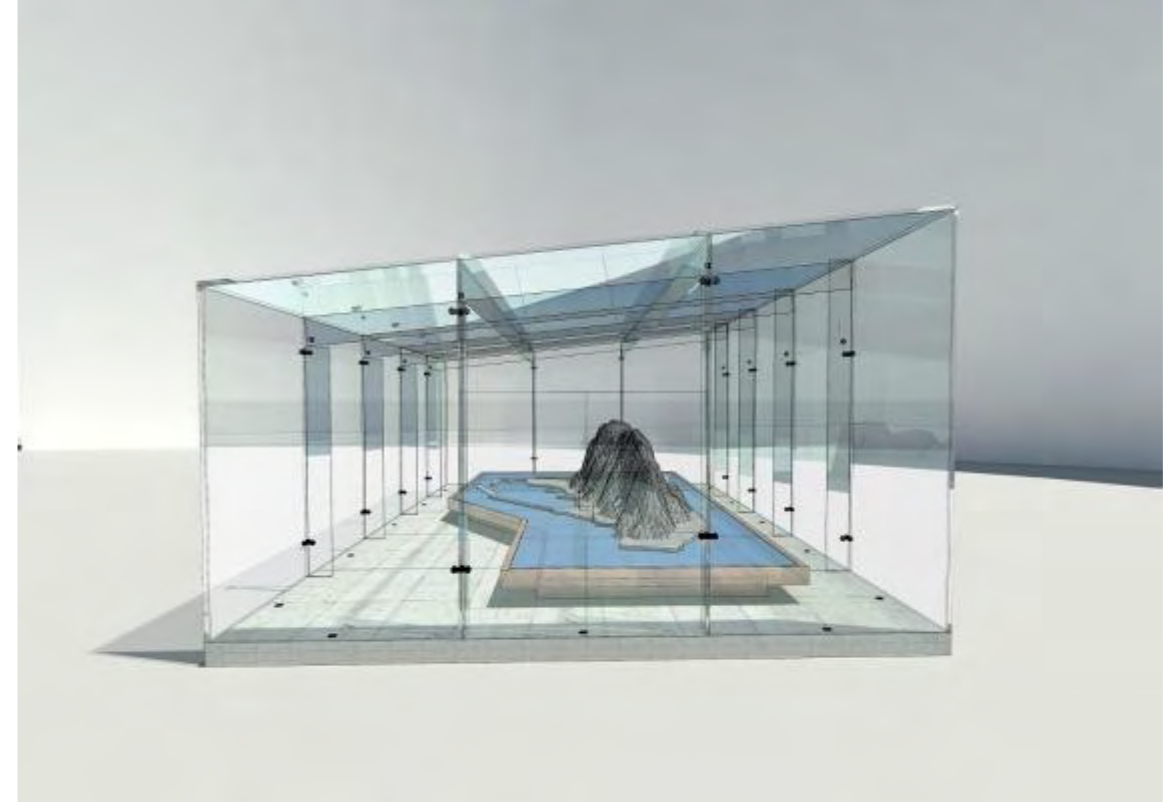
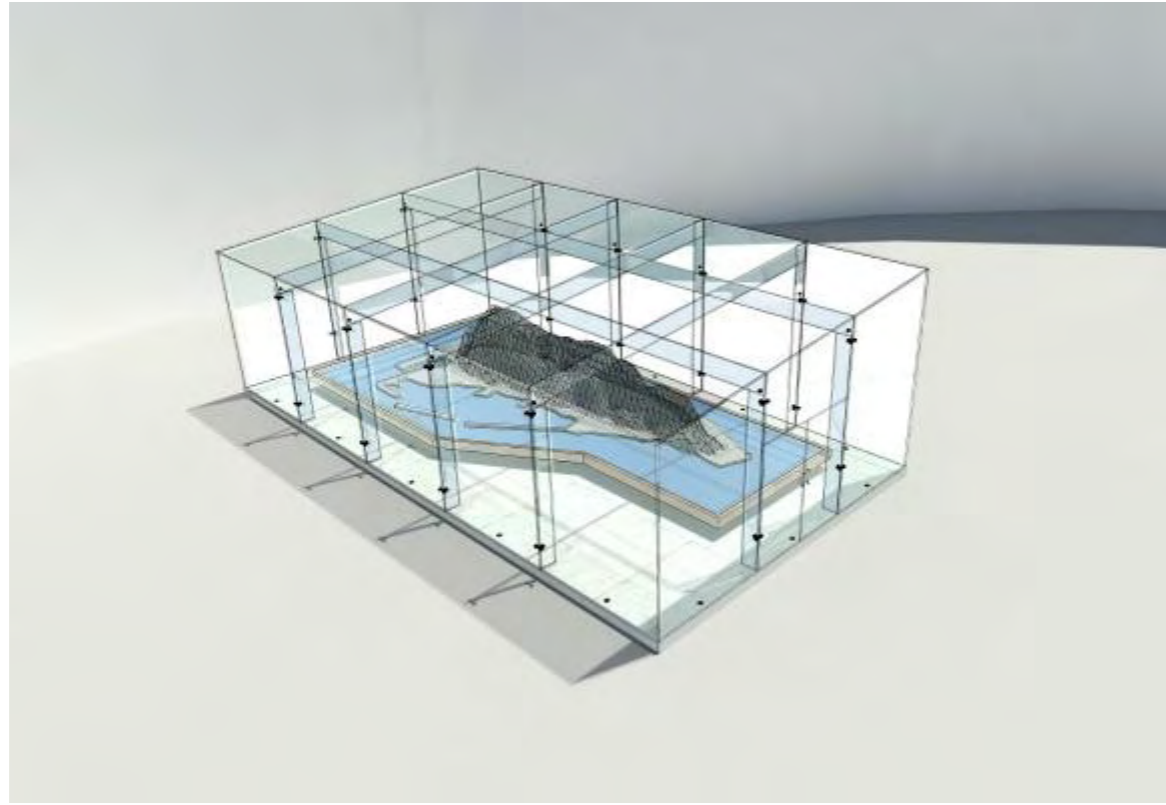
**Single Pilkington Planar™ Glazing – Performance**

Glass Type	Colour	Thickness (mm)	Light Transmittance LT	Light Reflectance LR	Total Solar Radiant Heat Transmittance	Total Shading Coefficient	U Value (W/m²K)	R <sub>w</sub> Value (dB)
Pilkington <b>Optifloat™</b>	Clear	10	0.87	0.08	0.78	0.90	5.6	34
		12	0.85	0.08	0.75	0.86	5.5	35
		15	0.83	0.08	0.71	0.82	5.5	36
		19	0.81	0.07	0.67	0.77	5.3	40
Pilkington <b>Optifloat™</b>	Bronze	10	0.32	0.05	0.46	0.53	5.6	34
		10	0.26	0.05	0.46	0.53	5.6	34
		10	0.67	0.07	0.51	0.59	5.6	34
Pilkington <b>Optiwhite™</b>	Clear	10	0.90	0.08	0.89	1.02	5.6	34
		12	0.90	0.08	0.88	1.01	5.6	35
		15	0.90	0.08	0.87	1.00	5.5	36
		19	0.89	0.08	0.86	0.99	5.3	40
Pilkington <b>Arctic Blue™</b>	Blue	10	0.38	0.05	0.42	0.48	5.6	34
Pilkington <b>Activ™</b> Clear	Clear	10	0.81	0.14	0.74	0.85	5.6	34
Pilkington <b>Activ™</b> Blue	Blue	10	0.35	0.13	0.38	0.44	5.6	34



Planar Intrafix insulated double glazed unit with standard angle spring plates.

1  
2  
3  
4  
5  
6  
7  
8  
9  
10  
11  
12  
13  
14



**Cost Analysis of the Rock Model Pavilion**

**Approx. Area:** 66sqm  
**Approx. Construction Cost:** £165,000 - £195,000

[Nb: these figures are based on assumed rates, and would need to be worked out in detail by a QS once a Full Technical Design is available, and finally, priced accordingly by a suitable Contractor before construction]



- 1
- 2
- 3
- 4
- 5
- 6
- 7
- 8
- 9
- 10
- 11
- 12
- 13
- 14



- 1
- 2
- 3
- 4
- 5
- 6
- 7
- 8
- 9
- 10
- 11
- 12
- 13
- 14



- 1
- 2
- 3
- 4
- 5
- 6
- 7
- 8
- 9
- 10
- 11
- 12
- 13
- 14



- 1
- 2
- 3
- 4
- 5
- 6
- 7
- 8
- 9
- 10
- 11
- 12
- 13
- 14